

# Laptop Networking Troubleshooting

There are two areas that commonly give laptop users problems

Networking and Printing

## Networking troubleshooting.

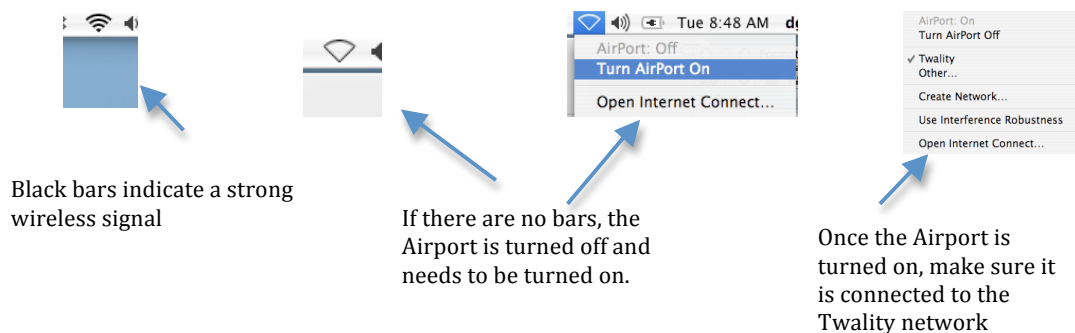
Our laptops are networked through a wireless network router. The router is somewhere within 100 feet of your laptop. If the router is disconnected or out of range, you will not be able to network.

Steps to problem solving networking issues:

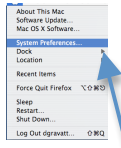
Look in the upper right of the menu bar. You should see a wireless network icon. If the icon has black bars, you know there is a wireless router plugged in nearby. If the icon is grey, you do not have a router nearby or it is unplugged. The number of black bars on the wireless network icon indicates the strength of your wireless connection.

The wireless network could be turned off on the computer. If the wireless icon has no bars at all, click on the icon and “Turn Airport on”

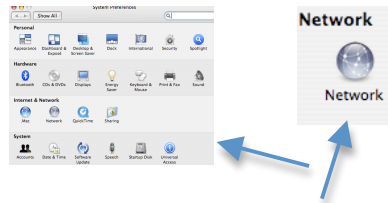
Click on the wireless icon again and make sure it has connected to the Twality network.



If you still have no network, you will need to log out of students and log in as teacher. Once you are in as teacher, go the apple menu and open system preferences. In the system preferences, look for the network icon. You will need to see if the machine is receiving a 10.10.1.??? IP address. If it is not networking, you will see a 169.254.101.??? or something similar. You must see a 10.10 to network in our district. If you do not and you know the wireless router is connected, call Diana or Doug at 5252 or 5273



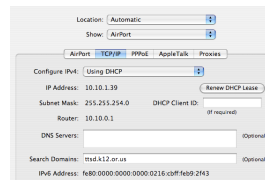
Go to the Apple Menu and select System Preferences



In the System Preferences window, click on the Network Icon



In the Network window, you will see an AirPort configuration. In the newer Leopard operating system, the will be an IP address.



In the older Tiger operating system, you will need to double click on the airport configuration and then click on TCIP. You will be able to see the IP address in the TCIP window.